



Casey Architectural Lighting

Custom Lighting Solutions for
Architectural Spaces



Project Showcase



Marriott Hotel - Phoenix, AZ

As one enters the lobby of the Phoenix Airport Hotel, your eye is drawn to the disk in the center of the room, illuminating the suspended, champagne colored acrylic stars, mimicking the Arizona night sky. In the event room, the fan pattern of suspended, linear LED fixtures keep the audience cool from the desert heat outside.

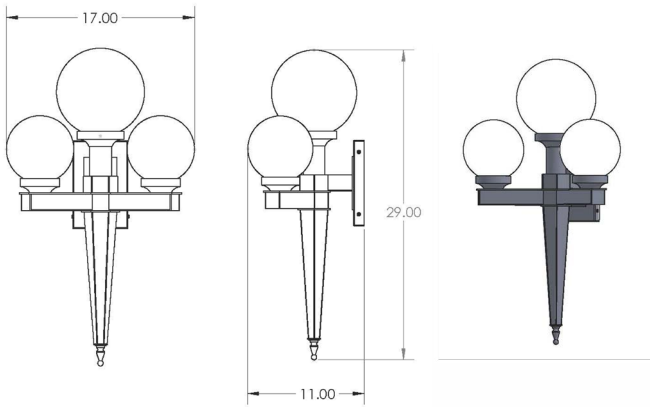
Marriott Hotel - Chicago, IL

Four completely different styles of unique, one of a kind lighting were developed for the the Marriot O'Hare Airport Hotel. The style shown is five rows of suspended "linear" LED acrylic tubes, grouped together to give the appearance of a large chandelier. The glass tubes have an internal frosted tube, an external clear tube and provide 360 degrees of illumination. They're connected by bent tubing to complement the design patterns in the floor and maintain the wavy theme throughout the facility.



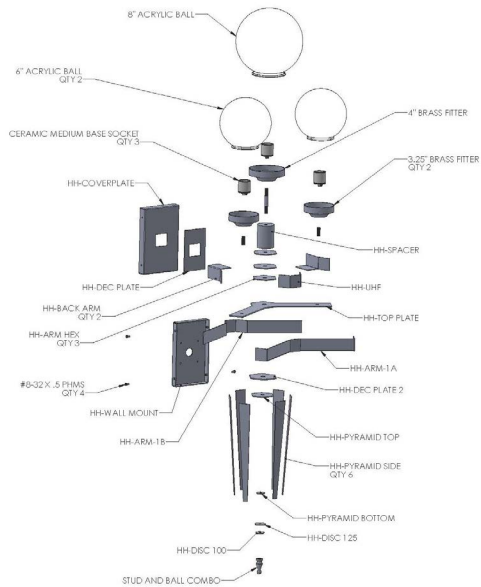
1

Our projects start with a sketch, a photograph or a spec sheet, showing the possible concept for the project.



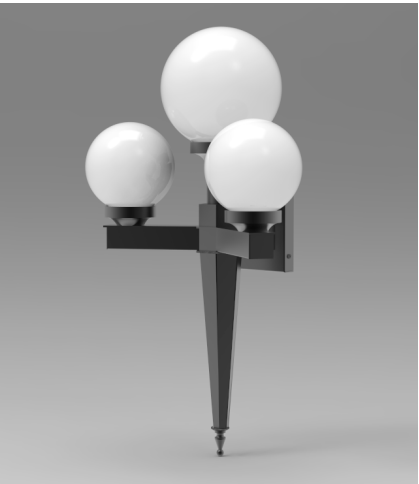
3

Once the spec sheet is approved and an order is received, manufacturing drawings are created.



5

The final product is carefully inspected and packaged for maximum protection during shipment.



2

From there, we develop a specification sheet for approval. Detailed approval drawings are created, as required.

Custom Wall Mount
A custom fixture with perfectly diffused illumination. Modern design featuring simplicity and elegance.
Model Number: HH-WM-29-17-INC

Type

Electrical: 120 volts
Installation: Mounts to standard J-box
Lamping: Medium Base A19
Finishing: Standard Powder Coat

- Wall mounting
- Precision aluminum construction
- Standard Powder Coat
- Built to UL 1598 standards

This is a conceptual rendering of the fixture. Materials and finishes will vary based on customer specifications.

Model	H	D	W	Volt	Watts	Lamping	Acrylic	Finish
HH-WM-29-17-INC	29"	17"	11"	120v	60 watts each	3 - A19 Sockets	WH - Opal White SW - Satin White	SPC - Standard Powder Coat

Ordering number

Model

Color Temp.

Acrylic

Finish

APPLICATION NOTE:

Due to the highly customized nature of this fixture, Casey Architectural Lighting, LLC reserves the right to substitute comparable components as necessary to comply with Interrel's UL or ETL listing requirements.

4

Our capabilities include fabrication, welding, powder coat finishes, plated finishes and assembly of sheet metal, extruded and cast constructed products.



Project Showcase



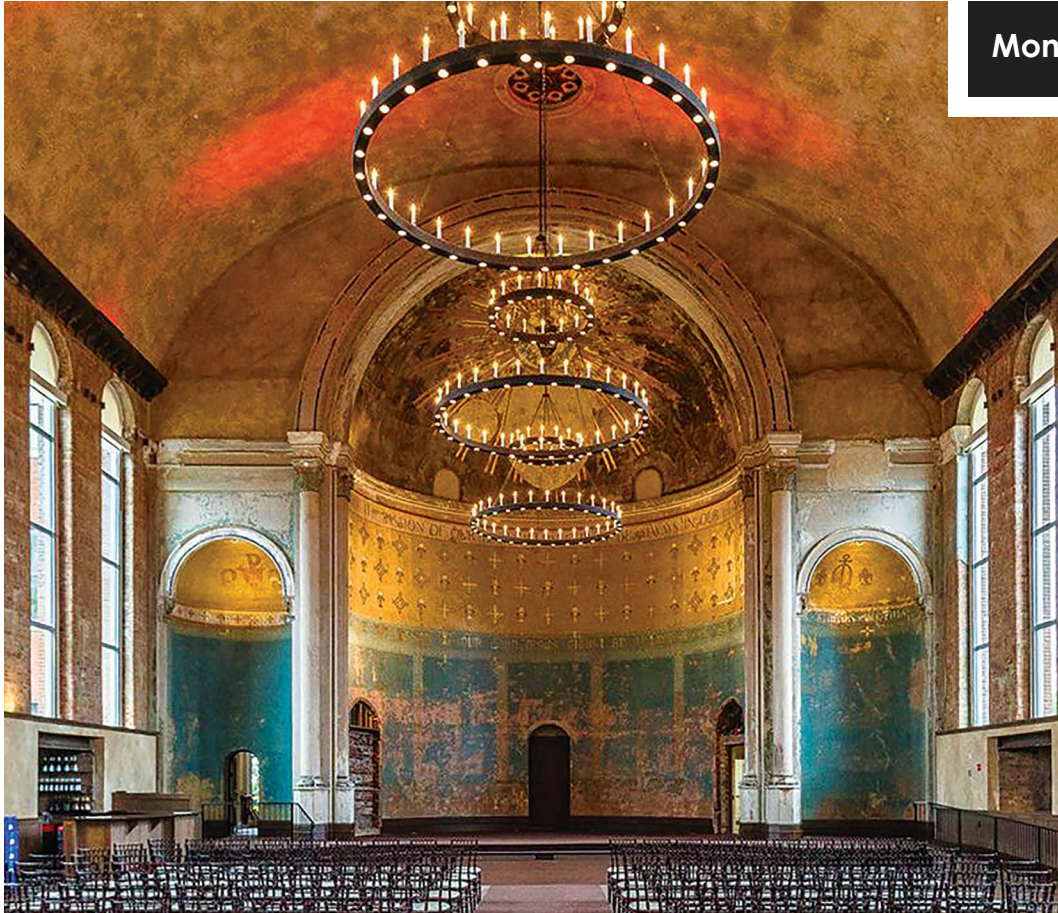
Marriott Hotel - Phoenix, AZ

As one enters the lobby of the Phoenix Airport Hotel, your eye is drawn to the disk in the center of the room, illuminating the suspended, champaign colored acrylic stars, mimicking the Arizona night sky. In the event room, the fan pattern of suspended, linear LED fixtures keep the audience cool from the desert heat outside.



Iron Hill Brewery - Philadelphia, PA

The designers for Iron Hill Brewery wanted unique lighting that would fit with the company name and give the desired look and feel to the restaurant space. Working from the designers sketch, two size illuminated rings were developed. The 33-inch diameter rings in the lower ceiling area are finished with a simulated rust powder coat finish. The 48-inch diameter are finished in a black wrinkle powder coat finish to match the ceiling structure and to complement the ceiling color.



Monastery Event Center - Cincinnati, OH

Transforming a monastery with sixty foot high ceilings, into a wedding hall needed lighting that filled the space without overpowering the room. Each pendant has a 5-foot diameter upper ring and a 10-foot diameter lower ring. Traditionally styled LED 46 candelabras were placed around the upper portions of the rings. Working with the client to satisfy illumination needs, 46 separately controlled, dimmable LED downlights were added in bottom of each ring.

Marriott Hotel - Chicago, IL

Four completely different styles of unique, one of a kind lighting were developed for the the Marriot O'Hare Airport Hotel. The style shown is five rows of suspended "linear" LED acrylic tubes, grouped together to give the appearance of a large chandelier. The glass tubes have an internal frosted tube, an external clear tube and provide 360 degrees of illumination. They're connected by bent tubing to complement the design patterns in the floor and maintain the wavy theme throughout the facility.



Hotel Indigo - Tulsa, OK

Located in Tulsa's down-to-earth Blue Dome District, Hotel Indigo Tulsa capture's the local art, music and industry in the design of the property. GH2 Architects chose Casey Architectural Lighting to provide custom lighting for the project. Globes are mounted to a square tube structure as suspended from the ceiling with cable in the Prospect Bar



Marriott Hotel - Phoenix, AZ

This custom wall mount started with a standard Casey product. It was modified to match the architecture of the building and suit the illumination needs of the project. These ADA compliant units provide a soft glow at entry ways and on the pool deck. Hidden downlighting at the bottom of the fixture provides supplemental lighting for safety.



Whether a large or small project, we can meet your custom lighting needs.

No matter the venue you are lighting, the creative design team at Casey Architectural Lighting is there to assist. Whether you have a design concept in mind or you need creative assistance in developing an attractive design element for your project, our creative team is there for you.

The process first begins with meeting the illumination requirements to ensure that the lighting is not just a design element, but also effectively meeting your lighting needs.

Once the illumination specifications are met we then turn our full creative design talents to making the lighting fit seamlessly into your project.

Scale, aesthetics, finishes, quality in workmanship, ease of installation and maintenance, and safety are all given stringent consideration on our way to the final design.

Delivery and installation of the final product is always exciting, as the culmination of concept, design, fabrication, finishing, assembly, testing, and installation all come together to complete your vision.

Some projects have such unique and complex requirements that we send some of our lighting experts on site to advise and assist with any field assembly and installation. While not every project will require this, rest assured that we provide whatever level of support is needed to complete your project.



8517 Herrington Court, Pevely Missouri 63028

Phone: 636-543-323

www.CaseyArchitecturalLighting.com